



ĀMAN

SUMMER PALACE

颐和安缦



Just steps from the East Gate of the Summer Palace grounds lies Aman at Summer Palace – the ideal location from which to discover Beijing. Housed in a series of pavilions with peaceful internal courtyards embracing traditional Chinese architecture, the property welcomes guests in the elegant Arrival Pavilion (*left and above*).

颐和安缦距颐和园东宫门仅数步之遥，是您寻访北京的理想居所。亭台楼阁，静谧庭院，传统建筑，相得益彰。图为颐和安缦迎宾殿（左图和上图）。



The Arrival Pavilion is a welcoming space which also features the Lounge (*below*). Here guests can enjoy morning and afternoon tea overlooking a traditional courtyard shaded by indigenous trees.

大堂(右图)位于迎宾殿内,里侧是紫宸堂(下图),可惬意地坐在这里品尝茶点轻食,绿树掩映的传统庭院景色一览无余。





Set alongside a tranquil reflection pond, Naoki serves French *kaiseki* fare. This style of cuisine combines French technique with Japanese culinary artistry.

直树怀石料理餐厅坐落在一方宁静的池塘旁，巧妙糅合法式技艺及日本料理的烹饪艺术，提供别具一格的法式怀石料理。





The Grill features Western cuisine and specialises in grilled-to-order prime cuts of meat and fresh seafood.

绿盎扒房供应西餐，以特级肉类和新鲜海鲜即点即烤为特色。



Decorated with classic, Ming Dynasty-inspired furniture, the Chinese Restaurant serves Peking duck and several imperial dishes, along with traditional Cantonese cuisine. The restaurant consists of nine different rooms including six intimate areas for private gatherings.



中餐厅以明代经典家具风格为灵感装饰设计，主打传统粤菜，并提供北京烤鸭和特色宫廷菜肴。中餐厅共有九间房，其中包含六间私密的用餐包房。





A serene pond – frozen in winter – is situated between the Music Pavilion (*above*) and the Reflection Pavilion (*top right*). The Music Pavilion is host to performances in summer and ideal for private dining. The Reflection Pavilion features a spacious terrace and houses the Cigar Room and Bar.



赏悦亭（上图）与镜影轩（右上图）之间是一池碧水，夏季可作为表演或私人餐宴之用，冬季结冰后则是一番晶莹剔透的光景。从镜影轩室外的宽敞露台上即可观赏池塘及赏悦亭美景，室内设有雪茄房和酒吧。



The Aman Club Pavilion is located adjacent to the Arrival Pavilion of Aman at Summer Palace. Inside the elegant Club Lounge (*right*) is a Wine Cellar (*below*) featuring wines from all over the world.

安缦汇酒廊(右图)靠近迎宾殿,内设步入式酒窖(下图),收藏了来自世界各地的美酒佳酿。





Suites surround internal courtyards, crisscrossed by pathways and shaded by bamboo and indigenous trees. There are 8 Guestrooms, 10 Courtyard Guestrooms, 8 Suites, 17 Deluxe Suites and 7 Courtyard Suites. The Imperial Suite comprises three separate pavilions: the bedroom pavilion, the living/study pavilion and the formal pavilion which has a boardroom seating up to 16 guests.

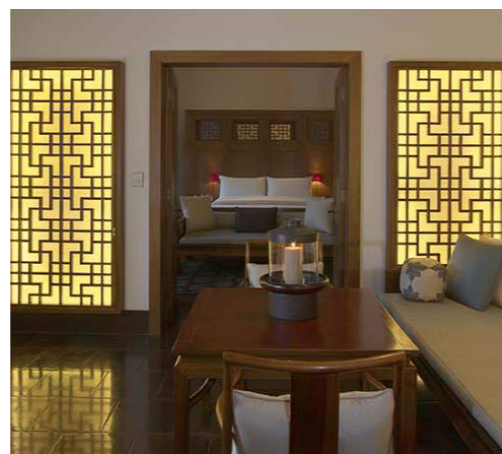
套房环抱形成一个自然院落，当中石径逶迤，竹影婆娑。颐和安缦共有八间客房、十间庭院客房、八间套房、十七间豪华套房和七间庭院套房。御庭套房包括三栋独立建筑：卧室、起居室/书房以及一间可容纳十六名贵宾的私人餐厅/会议室。





Aesthetics of the Imperial Suite are mirrored throughout the resort's accommodations. High ceilings reveal original wooden beams, and blinds and screens combine with Ming Dynasty-inspired furniture to create a sense of timeless elegance.

御庭套房集中体现了整间度假村所有房型的别致韵味，高耸的天花、古老的桁梁、竹帘、屏风以及明代风格的家具，都为其营造出一种超越时空的高贵典雅之感。





Different categories of suites feature king-size beds, daybeds, reading chairs and writing desks, with floors finished in polished Jin clay tiles. Each has its own unique layout and configuration.

不同类型的套房都配备有特大双人床、长榻、阅读椅及书桌，地面满铺着打磨得发亮的金砖。每一种房型都有其独特的布局和构造。



Courtyard Suite



Deluxe Suite





The resort celebrates Chinese culture, regularly inviting experts to demonstrate traditional arts such as calligraphy, paper cutting and kite making. The Boutique features unique Chinese artifacts and textiles.

度假村会定期邀请一些在中国传统艺术方面颇有造诣的专家到店表演及交流书法、剪纸、风筝制作等项目。精品店还收藏有许多独具一格的手工艺品和纺织品。



A spacious conference facility offers adaptability, cutting-edge technology and privacy to meet the highest level requirements. Video/teleconferencing, multi-system video players and wireless internet access are all available, and an experienced audio-visual team is on site to help arrange seamless presentations. Catering options are available for a range of different events.



宽敞的议事房会议室提供一系列多功能、高科技的会议设施，在保证绝对隐私的同时满足贵宾的最高要求。视频/电话会议、多系统视频播放功能、无线上网以及经验丰富的驻店视听团队，协助您呈现完美的会议展示。此外还可提供一系列不同的餐饮服务。



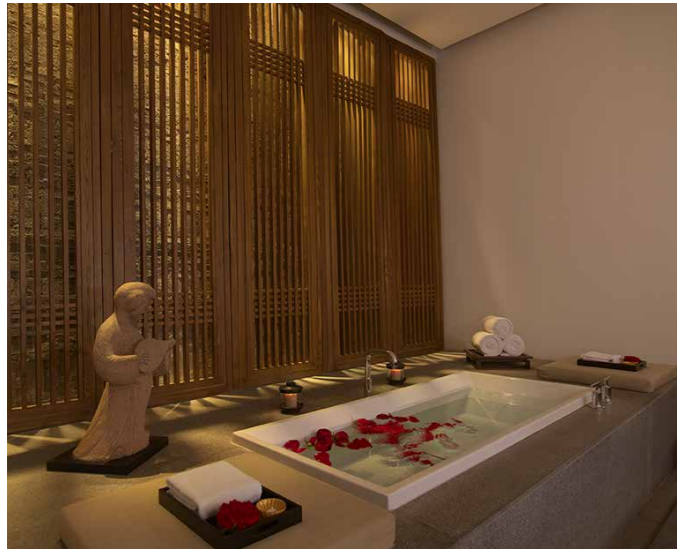
One of Beijing's most expensive recreational facilities is located beneath the resort, covering 5,000 square metres over two levels. Light filters through a large glass sky light (*centre left*) into the gym and Pilates studio on the first level. Also on offer are an Aman Spa, two squash courts, an indoor pool, a cinema and the Juice Bar.

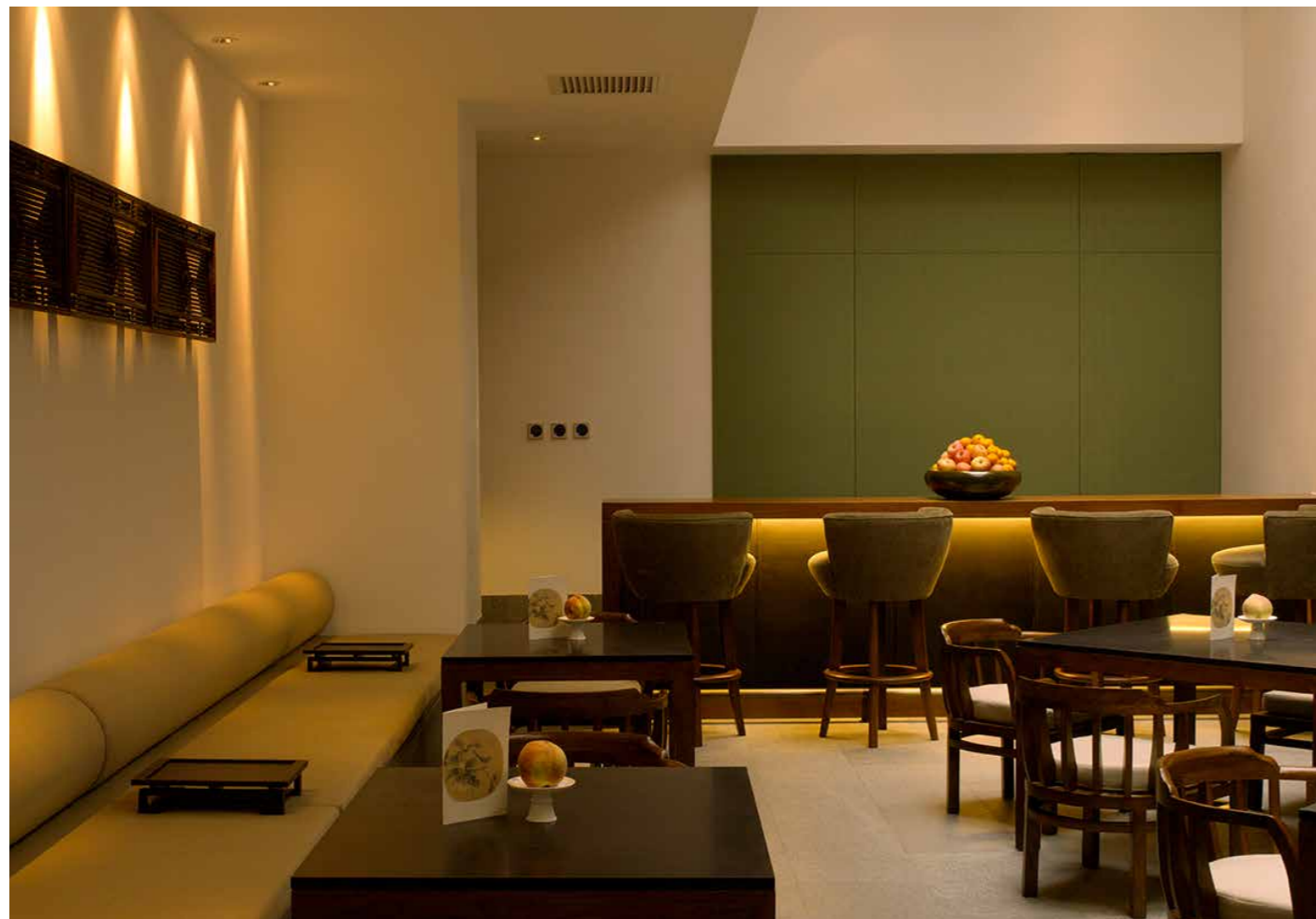




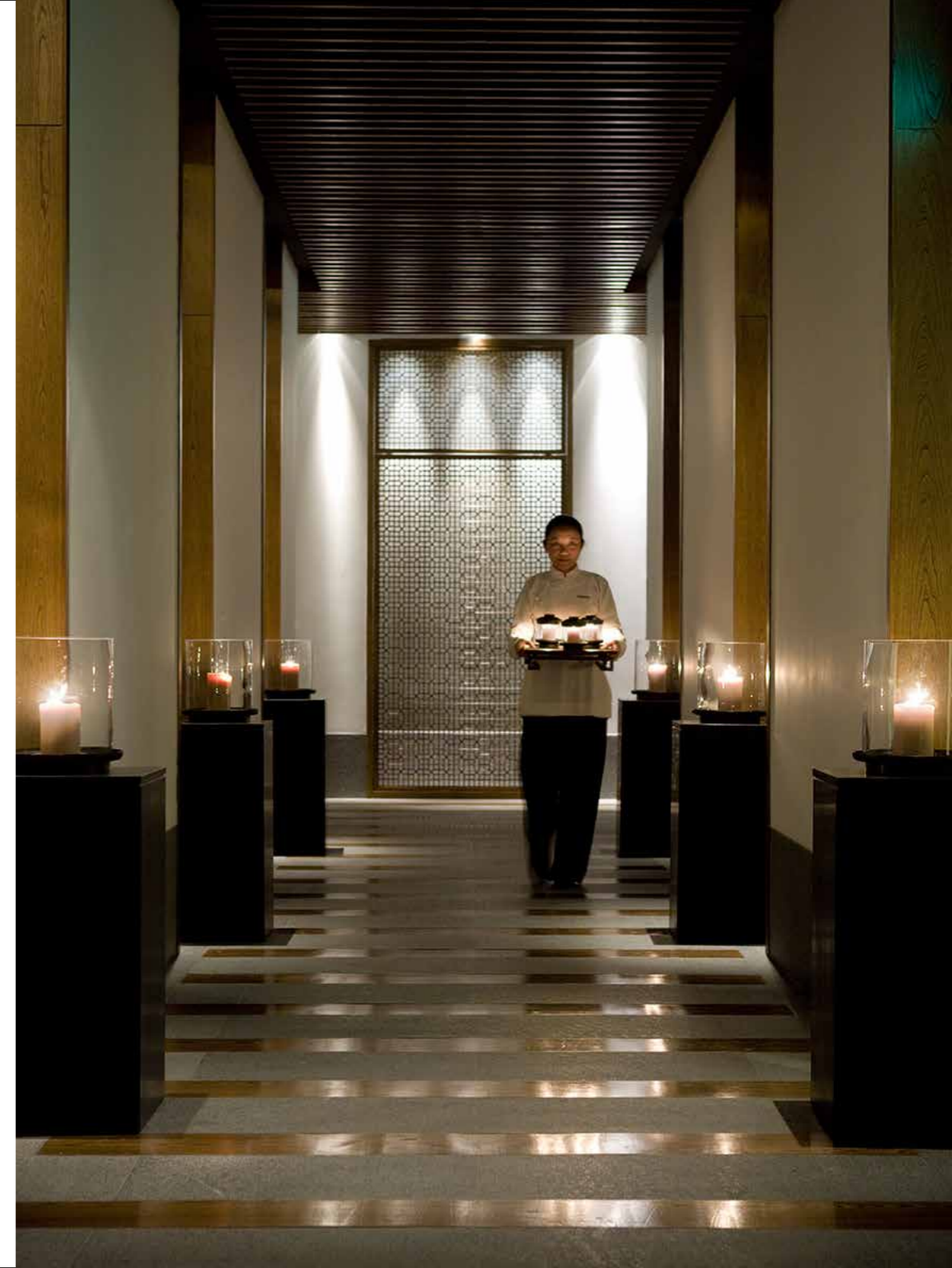
The inviting indoor lap pool is temperature-controlled for all seasons.

Aman Spa features a sauna, steam bath, nine self-contained double treatment rooms and a host of health and beauty services ranging from invigorating scrubs to a selection of soothing massages.





The entrance to Aman Spa (*right*) sets the tone for a tranquil spa experience. The fully-equipped gym has fitness consultants on hand to provide personal training or squash partners. The Pilates studio offers a number of reformers and hosts private and group classes. The Juice Bar (*top left*) serves healthy snacks and fresh juices. The cinema features 37 reclining leather seats and a 21-square-metre screen. Films, television broadcasts or business presentations can be screened.

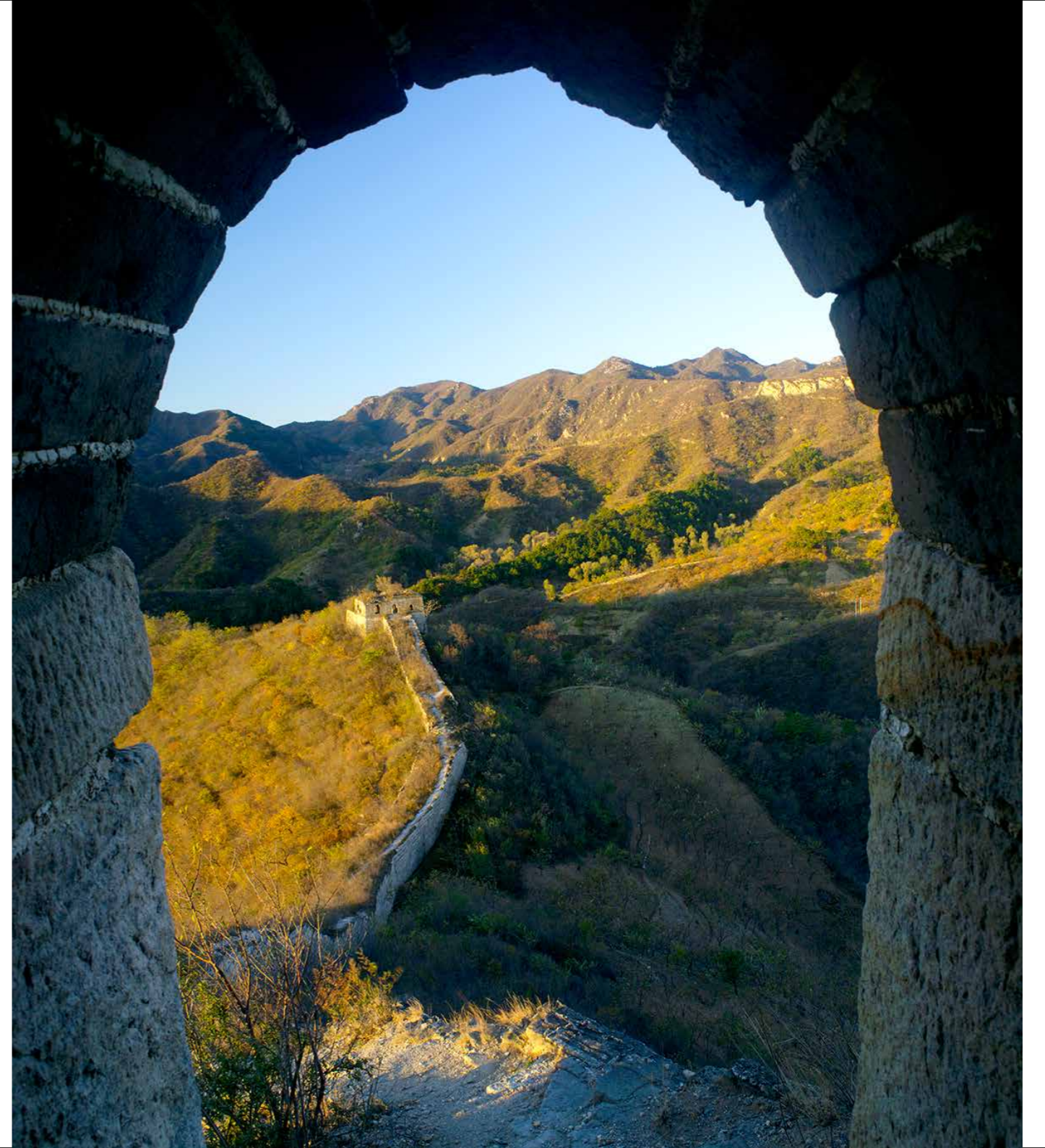


Built in 1750, the 290-hectare Summer Palace is a beautiful garden estate dotted with palaces, pavilions and ornate bridges around Kunming Lake. The property was an imperial retreat during the Qing Dynasty as a means to escape the summer heat of the Forbidden City, but is equally picturesque in winter when the lake freezes over. It was the favourite abode of the Empress Dowager Cixi at the turn of the last century.





Beijing offers visitors a kaleidoscope of old and new. The resort's location is ideal for visiting historic sites such as Tiananmen Square, the Forbidden City, the Temple of Heaven and the *butongs*, as well as the centuries-old Great Wall which stretches more than 6,400 kilometres across China. Modern attractions in Beijing include 798 Art Zone and the Bird's Nest.





Travellers to Beijing will enjoy the unique setting of Aman at Summer Palace and its close proximity to the wonders, both past and present, of China's vibrant capital.

来北京颐和安缦，尽享独一无二的入住体验，尽享中国这座活力四射的首都过往传承和当下创造的奇迹。

Ā M Ā N

Ā M Ā N  
SUMMER PALACE  
颐和安缦

1 Gongmenqian Street, Summer Palace, Beijing, PRC 100091 中国北京颐和园宫门前街1号邮编100091  
Tel 电话: (86) 10 5987 9999 Fax 传真: (86) 10 5987 9900 China toll-free 中国免费热线: 800 990 9990 Email 电邮: amanatsummerpalace@amanresorts.com

aman.com