

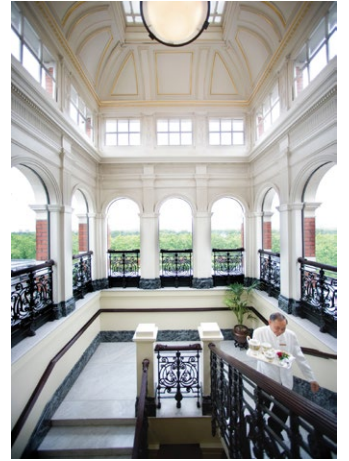


MANDARIN ORIENTAL
HYDE PARK
LONDON

MANDARIN ORIENTAL

Your journey begins here





LONDON

*"By seeing London, I have seen as much of life as the world can show."
-Samuel Johnson, English Poet*

DELIGHT IN ENGLISH CHARM





PARK LIFE

*As the only hotel in London directly overlooking
Hyde Park, guests have unrivalled views over
tranquil royal parkland and can catch a glimpse of
the Household Cavalry as they ride past.*



THE BEST ADDRESS

With bustling Knightsbridge on its doorstep and leafy Hyde Park to the rear, Mandarin Oriental Hyde Park is one of London's most prestigious addresses. With sumptuous guestrooms, a world class spa and a stylish bar, it provides the perfect setting for a luxury escape.





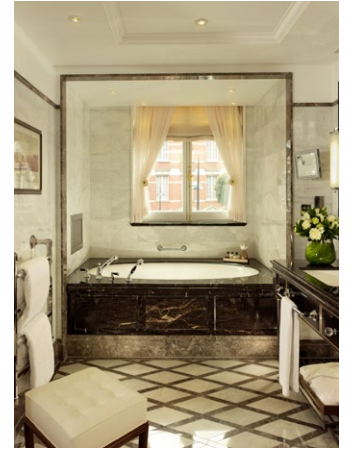
CONTEMPORARY BRITISH STYLE

Behind the exquisite materials and handcrafted finishes in each of our rooms and suites you will find the latest technology and a level of refined luxury that embodies our commitment to uncompromising quality.

ENGLISH ELEGANCE

Immerse yourself in classic English elegance with beautifully designed guest rooms that exude comfort and style and feature luxurious marble baths.





LUXURIOUS SUITES

Styled to capture a multitude of English personalities, our 26 individually-decorated suites have views over Knightsbridge and Hyde Park.



THE ROYAL SUITE

While remaining true to its elegant Victorian architectural heritage, the Royal Suite offers a chic, contemporary city apartment vibe. A sweeping balcony runs the length of the 242 square metre suite, with priceless artwork and private service.

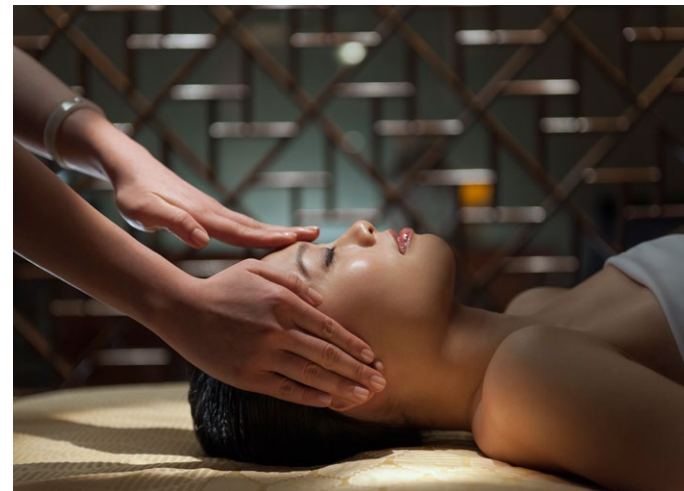
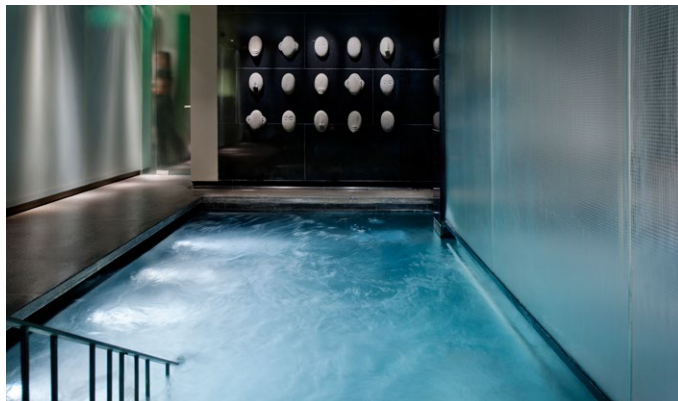




REDEFINING SPA CULTURE

*The award-winning spa combines harmonious design elements
with therapeutic rituals, entirely dedicated to your well-being.
We tailor many treatments to the specific needs of each guest,
focused on their individual needs.*

REJUVENATE YOUR SPIRIT



Step into a space where tranquillity pervades. Visit our Amethyst Crystal Steam Room to ease tension, unwind in the Zen Colour Therapy Relaxation Room and feel the soothing effects of the Vitality Pool on tired joints.



TEA AT THE ROSEBERY

Discover a quintessential British experience by joining us for traditional afternoon tea at The Rosebery. Choose from an extensive selection of the finest teas from around the world, matched with a delectable menu of sandwiches, pastries and cakes. An elegant lounge dining menu is available in the evening.

DINNER BY HESTON BLUMENTHAL



Dinner by Heston Blumenthal, the two Michelin-starred restaurant offers simple modern dishes, inspired by British historic gastronomy.



BAR BOULUD, LONDON



Michelin-starred chef Daniel Boulud's only London restaurant delights the senses with seasonal French-American cuisine. Guests can watch the chefs at work from the charcuterie counter or dine in the main restaurant with a relaxed ambiance and fabulous rustic flavour.



THE PERFECT VENUE

Featuring luxurious interiors, extensive meeting and banquet facilities, award-winning cuisine and Mandarin Oriental's gracious service, all rooms boast an abundance of natural daylight and technology ready services.



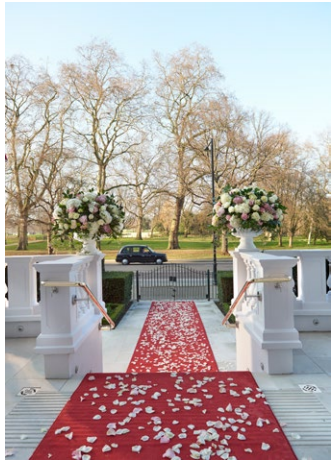
FIRST-CLASS BUSINESS SERVICE



With first-rate technology and excellent event facilities, we offer the perfect environment for all business gatherings.



A WEDDING TO REMEMBER



Having long been the setting for many opulent weddings and extravagant parties, Mandarin Oriental Hyde Park can cater for occasions of all sizes; from small intimate affairs to sit down banquets for up to 250 guests in the gilded ballroom.



MANDARIN ORIENTAL HYDE PARK, LONDON

LOCATION

*Overlooking Hyde Park and
Knightsbridge*

*Minutes from Knightsbridge underground
station*

*Within walking distance of Sloane Street,
Harrods, Harvey Nichols and Green Park*

*Excellent location for the Royal Albert
Hall and South Kensington's famous
museums*

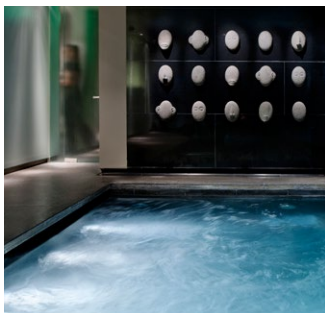


ROOMS & SUITES

167 guestrooms all with marble bathrooms

26 individually-decorated suites

*Butler service available in our Royal,
Imperial and Presidential Suites*



SPA & WELLNESS

8 treatment rooms, all with private showers

Extensive heat and water facilities

Zen colour therapy relaxation area

*Expert therapists and comprehensive list
of holistic treatments*

Spa Boutique



MEETINGS & EVENTS

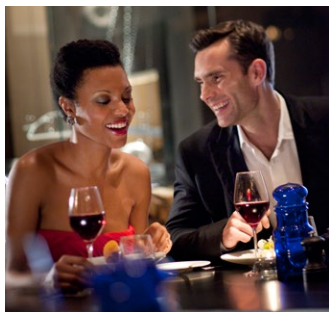
A stunning ballroom

Five further event and meeting spaces

Catering for up to 650 guests

Fully equipped business centre

*Dedicated wedding coordinator and
event planners*



RESTAURANTS & BARS

Acclaimed British cuisine at Dinner by Heston Blumenthal

Authentic French bistro dining at Bar Boulud, London

*The Rosebery Lounge, all day dining with afternoon tea and evening
cocktails*

Contemporary design and perfect cocktails at Mandarin Bar



LEISURE

*Fully-equipped fitness centre with
state-of-the-art fitness technology by
Technogym®, including Treadmills, Cross
Trainers, Bikes and a Rowing Machine*

*A 17-metre twin lane, stainless-steel
heated swimming pool with lap timer*

*Adjacent to Hyde Park and 350 acres
of green space*

